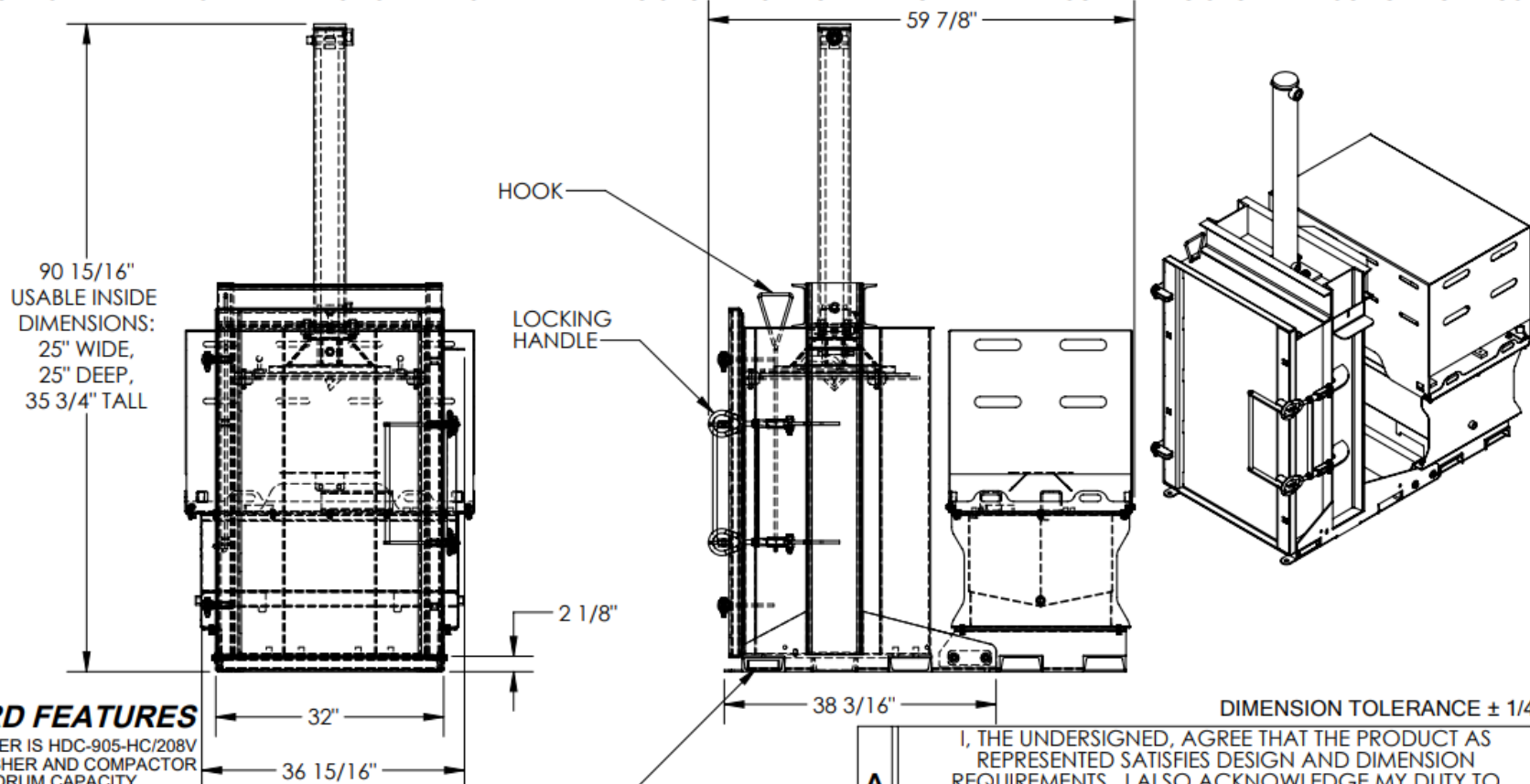


# HIGH-CYCLE HYDRAULIC DRUM CRUSHER/ COMPACTOR - HDC-905-HC/208V

APPROX WEIGHT: 1429.46 lbs.  
DOES NOT INCLUDE WEIGHT OF POWER OR PACKAGING!!!

\*\*\* ANY ADDITIONS, DELETIONS, OR OMISSIONS MUST BE CORRECTED ON THIS DRAWING AS THIS DRAWING WILL BE CONSIDERED ALL INCLUSIVE \*\*\*  
ALL GRAPHICS PROVIDED ARE FOR REFERENCE ONLY. IF CERTAIN DIMENSIONS ARE CRITICAL PLEASE VERIFY THOSE DIMENSIONS WITH YOUR SALESPERSON



## STANDARD FEATURES

MODEL NUMBER IS HDC-905-HC/208V  
DRUM CRUSHER AND COMPACTOR  
STD. 55 GAL. DRUM CAPACITY  
POSITIVE DRUM POSITIONING  
DRUM HEAD PIERCER TO RELEASE  
INTERNAL DRUM PRESSURE  
6.5 HP, THREE PHASE (PREWIRED FOR 208V)  
2-SPEED HYD. GEAR PUMP -- 11 GPM  
4" DIA. PISTON CYLINDER W/ 36"  
OF STROKE --FULL CYCLE TIME OF 25 SECONDS  
(CRUSH AND RETRACT)  
HYD.SYSTEM PRESS. RATING: 3000 PSI,  
W/ HYD. SYSTEM RELIEF VALVE  
38,000 LBS. OF CRUSHING FORCE --  
REDUCES STEEL DRUMS TO ONLY 6" HIGH  
24V CONTROL CIRCUIT, WITH:  
ON/OFF KEY SWITCH;  
CYCLE START BUTTON;  
CRUSH / COMPACT SELECTOR SWITCH;  
TWO PRESSURE SWITCHES --  
HIGH PRESSURE FOR CRUSHING,  
LOW PRESSURE FOR COMPACTING  
MATERIALS INSIDE A DRUM;  
DOOR INTERLOCK SWITCH  
DURABLE LIQUID PAINT BLUE FINISH

DRIP PAN  
CAPACITY: 1 GALLON

STANDARD POWER UP:  
208 VOLT, 3-PHASE

## SPECIAL FEATURES NONE

DIMENSION TOLERANCE  $\pm 1/4"$

APPROVAL

I, THE UNDERSIGNED, AGREE THAT THE PRODUCT AS REPRESENTED SATISFIES DESIGN AND DIMENSION REQUIREMENTS. I ALSO ACKNOWLEDGE MY DUTY TO CONFIRM PRODUCT AND INSTALLATION COMPLIANCE WITH ALL APPLICABLE FEDERAL, STATE AND LOCAL REGULATIONS AND STANDARDS.

**ANY MODIFIED UNITS ARE NON-RETURNABLE**

[ ] As drawn [ ] As marked

Signed: \_\_\_\_\_ Date: \_\_\_\_\_

Printed Name: \_\_\_\_\_

LEAD TIME WILL START UPON RECEIPT OF SIGNED APPROVAL DRAWING

FOR INTERNAL USE ONLY  
PROJECT SIGN OFF

SALES	
ENG.	
FAB.	
POWER	

DISTRIBUTOR'S NAME:		P.O.#
		X
W.O.#		X
DRAWN BY: TAW		DATE: 08/08/2016
REFERENCE: X	SCALE: 1:22	SALES: X
QUOTED LEAD TIME: X	QUOTE #	FILE NAME:
	X	22-007-015-001