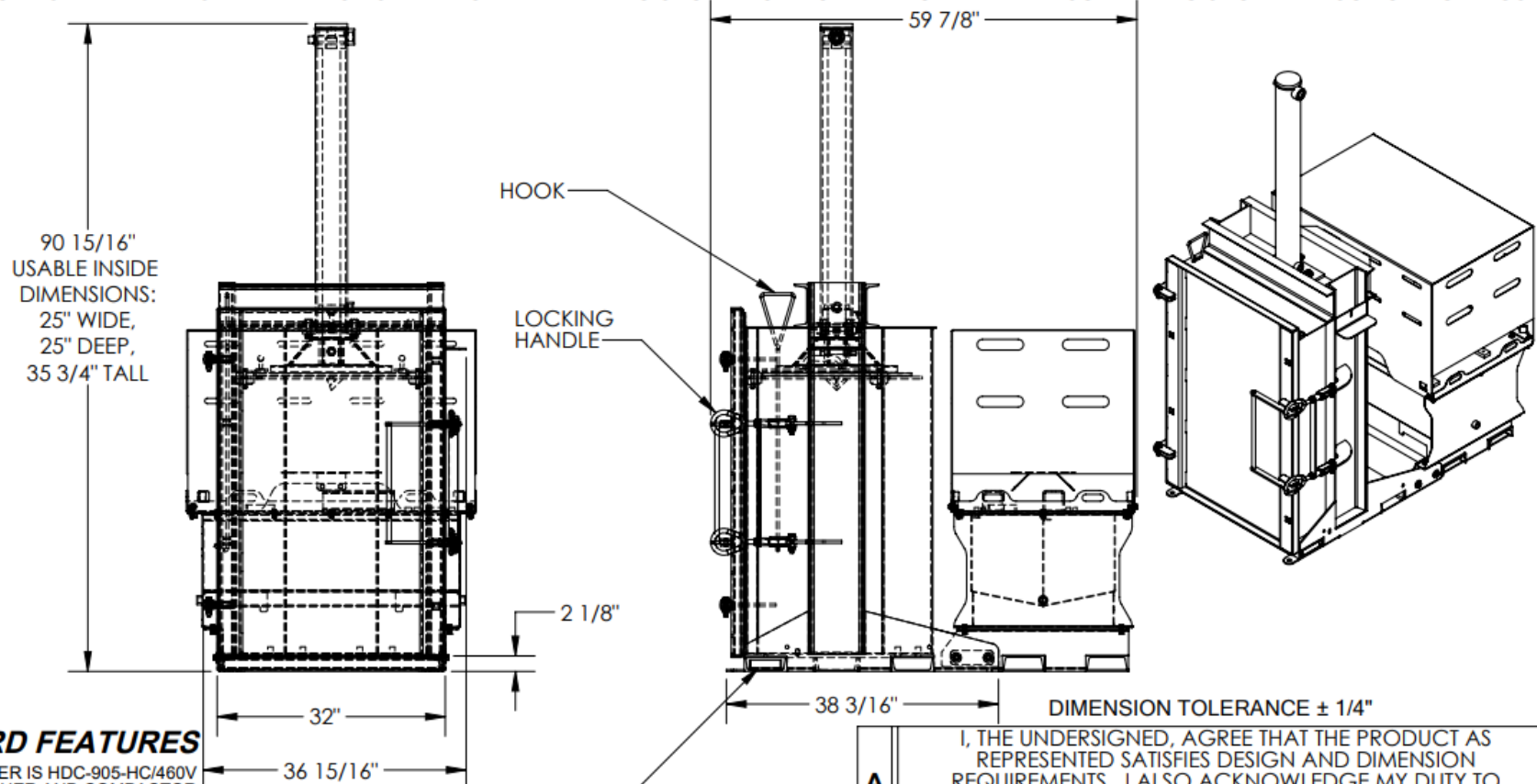


HIGH-CYCLE HYDRAULIC DRUM CRUSHER/ COMPACTOR - HDC-905-HC/460V

APPROX WEIGHT: 1429.46 lbs.
DOES NOT INCLUDE WEIGHT OF POWER OR PACKAGING!!!

*** ANY ADDITIONS, DELETIONS, OR OMISSIONS MUST BE CORRECTED ON THIS DRAWING AS THIS DRAWING WILL BE CONSIDERED ALL INCLUSIVE ***
ALL GRAPHICS PROVIDED ARE FOR REFERENCE ONLY. IF CERTAIN DIMENSIONS ARE CRITICAL PLEASE VERIFY THOSE DIMENSIONS WITH YOUR SALESPERSON



STANDARD FEATURES

MODEL NUMBER IS HDC-905-HC/460V
DRUM CRUSHER AND COMPACTOR
STD. 55 GAL. DRUM CAPACITY
POSITIVE DRUM POSITIONING
DRUM HEAD PIERCER TO RELEASE
INTERNAL DRUM PRESSURE
6.5 HP. THREE PHASE (PREWIRED FOR 460V)
2-SPEED HYD. GEAR PUMP -- 11 GPM
4\" DIA. PISTON CYLINDER W/ 36\"
OF STROKE --FULL CYCLE TIME OF 25 SECONDS
(CRUSH AND RETRACT)
HYD.SYSTEM PRESS. RATING: 3000 PSI,
W/ HYD. SYSTEM RELIEF VALVE
38,000 LBS. OF CRUSHING FORCE --
REDUCES STEEL DRUMS TO ONLY 6\" HIGH
24V CONTROL CIRCUIT, WITH:
ON/OFF KEY SWITCH;
CYCLE START BUTTON;
CRUSH / COMPACT SELECTOR SWITCH;
TWO PRESSURE SWITCHES --
HIGH PRESSURE FOR CRUSHING,
LOW PRESSURE FOR COMPACTING
MATERIALS INSIDE A DRUM;
DOOR INTERLOCK SWITCH
DURABLE LIQUID PAINT BLUE FINISH

DRIP PAN
CAPACITY: 1 GALLON

STANDARD POWER UP:
460 VOLT, 3-PHASE

SPECIAL FEATURES
NONE

FOR INTERNAL USE ONLY
PROJECT SIGN OFF

SALES	
ENG.	
FAB.	
POWER	

APPROVAL

I, THE UNDERSIGNED, AGREE THAT THE PRODUCT AS
REPRESENTED SATISFIES DESIGN AND DIMENSION
REQUIREMENTS. I ALSO ACKNOWLEDGE MY DUTY TO
CONFIRM PRODUCT AND INSTALLATION
COMPLIANCE WITH ALL APPLICABLE FEDERAL, STATE
AND LOCAL REGULATIONS AND STANDARDS.

ANY MODIFIED UNITS ARE NON-RETURNABLE

[] As drawn [] As marked

Signed: _____ Date: _____

Printed Name: _____

LEAD TIME WILL START UPON RECEIPT OF SIGNED APPROVAL DRAWING

DISTRIBUTOR'S NAME:		P.O.#	X
		W.O.#	X
DRAWN BY:	TAW	DATE:	8/8/2016
REFERENCE:	X	SCALE:	1:22
QUOTED LEAD TIME:	X	QUOTE #	X
		FILE NAME:	22-007-015-003