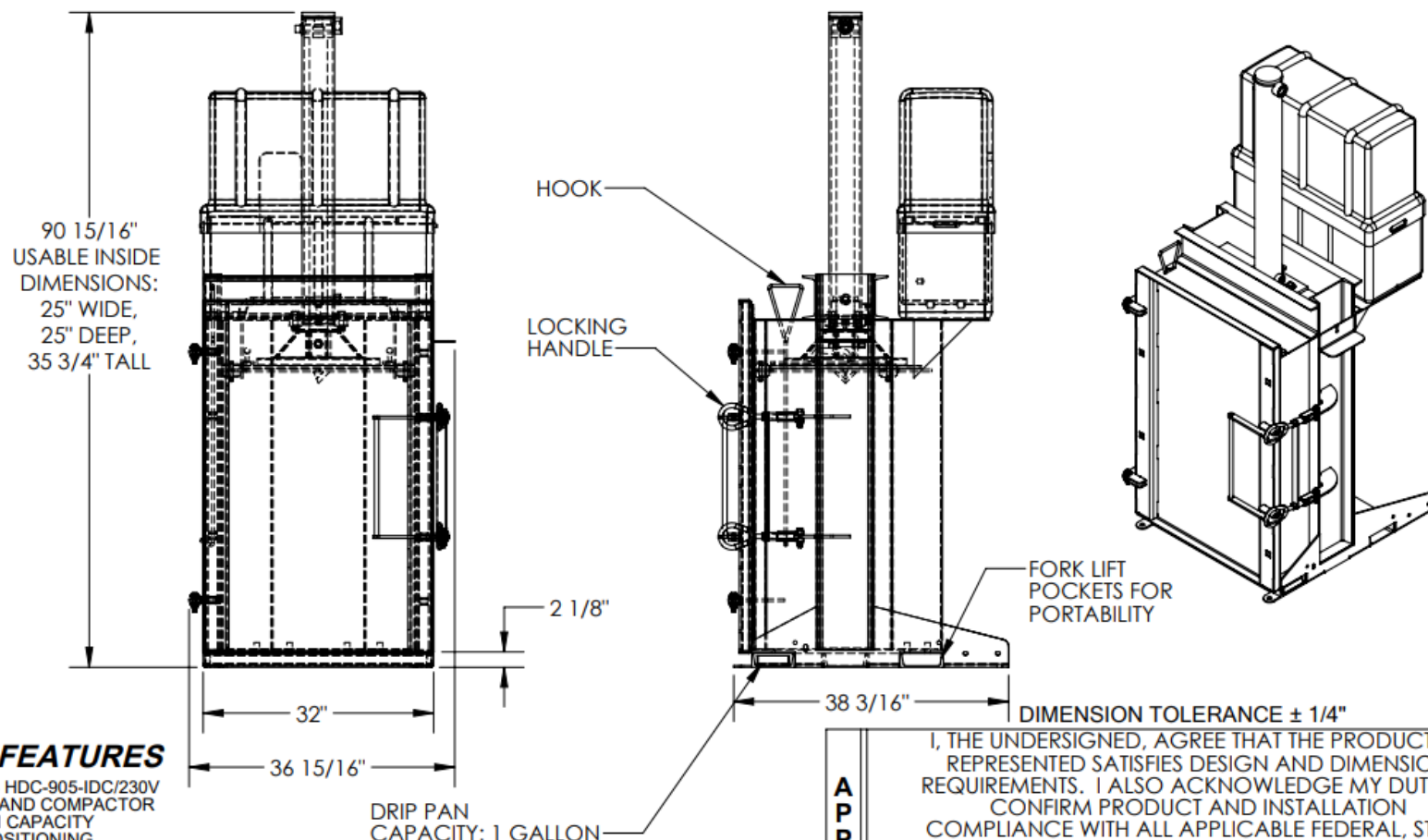


HYDRAULIC DRUM CRUSHER/ COMPACTOR- HDC-905-IDC/230V

APPROX WEIGHT: 1159.98 lbs.
DOES NOT INCLUDE WEIGHT OF POWER OR PACKAGING!!!

*** ANY ADDITIONS, DELETIONS, OR OMISSIONS MUST BE CORRECTED ON THIS DRAWING AS THIS DRAWING WILL BE CONSIDERED ALL INCLUSIVE ***
ALL GRAPHICS PROVIDED ARE FOR REFERENCE ONLY. IF CERTAIN DIMENSIONS ARE CRITICAL PLEASE VERIFY THOSE DIMENSIONS WITH YOUR SALESPERSON



STANDARD FEATURES

MODEL NUMBER IS HDC-905-IDC/230V
DRUM CRUSHER AND COMPACTOR
STD. 55 GAL. DRUM CAPACITY
POSITIVE DRUM POSITIONING
DRUM HEAD PIERCER TO RELEASE
INTERNAL DRUM PRESSURE
6.5 HP, THREE PHASE (PREWIRED FOR 230V)
2-SPEED HYD. GEAR PUMP -- 11 GPM
4" DIA. PISTON CYLINDER W/ 36"
OF STROKE --FULL CYCLE TIME OF 25 SECONDS
(CRUSH AND RETRACT)
HYD.SYSTEM PRESS. RATING: 3000 PSI,
W/ HYD. SYSTEM RELIEF VALVE
38,000 LBS. OF CRUSHING FORCE --
REDUCES STEEL DRUMS TO ONLY 6" HIGH
24V CONTROL CIRCUIT, WITH:
ON/OFF KEY SWITCH;
CYCLE START BUTTON;
CRUSH / COMPACT SELECTOR SWITCH;
TWO PRESSURE SWITCHES --
HIGH PRESSURE FOR CRUSHING,
LOW PRESSURE FOR COMPACTING
MATERIALS INSIDE A DRUM;
DOOR INTERLOCK SWITCH
DURABLE LIQUID PAINT BLUE FINISH

STANDARD POWER UP:
230 VOLT, 3-PHASE

SPECIAL FEATURES
NONE

**A
P
P
R
O
V
A
L**

I, THE UNDERSIGNED, AGREE THAT THE PRODUCT AS
REPRESENTED SATISFIES DESIGN AND DIMENSION
REQUIREMENTS. I ALSO ACKNOWLEDGE MY DUTY TO
CONFIRM PRODUCT AND INSTALLATION
COMPLIANCE WITH ALL APPLICABLE FEDERAL, STATE
AND LOCAL REGULATIONS AND STANDARDS.

ANY MODIFIED UNITS ARE NON-RETURNABLE

[] As drawn [] As marked

Signed: _____ Date: _____

Printed Name: _____
LEAD TIME WILL START UPON RECEIPT OF SIGNED APPROVAL DRAWING

FOR INTERNAL USE ONLY
PROJECT SIGN OFF

SALES	
ENG.	
FAB.	
POWER	

DISTRIBUTOR'S NAME:		P.O.#
		X
W.O.#		X
DATE:	8/8/2016	SALES: X
REFERENCE: X	SCALE: 1:22	FILE NAME:
QUOTED LEAD TIME: X	QUOTE #	22-007-017-002