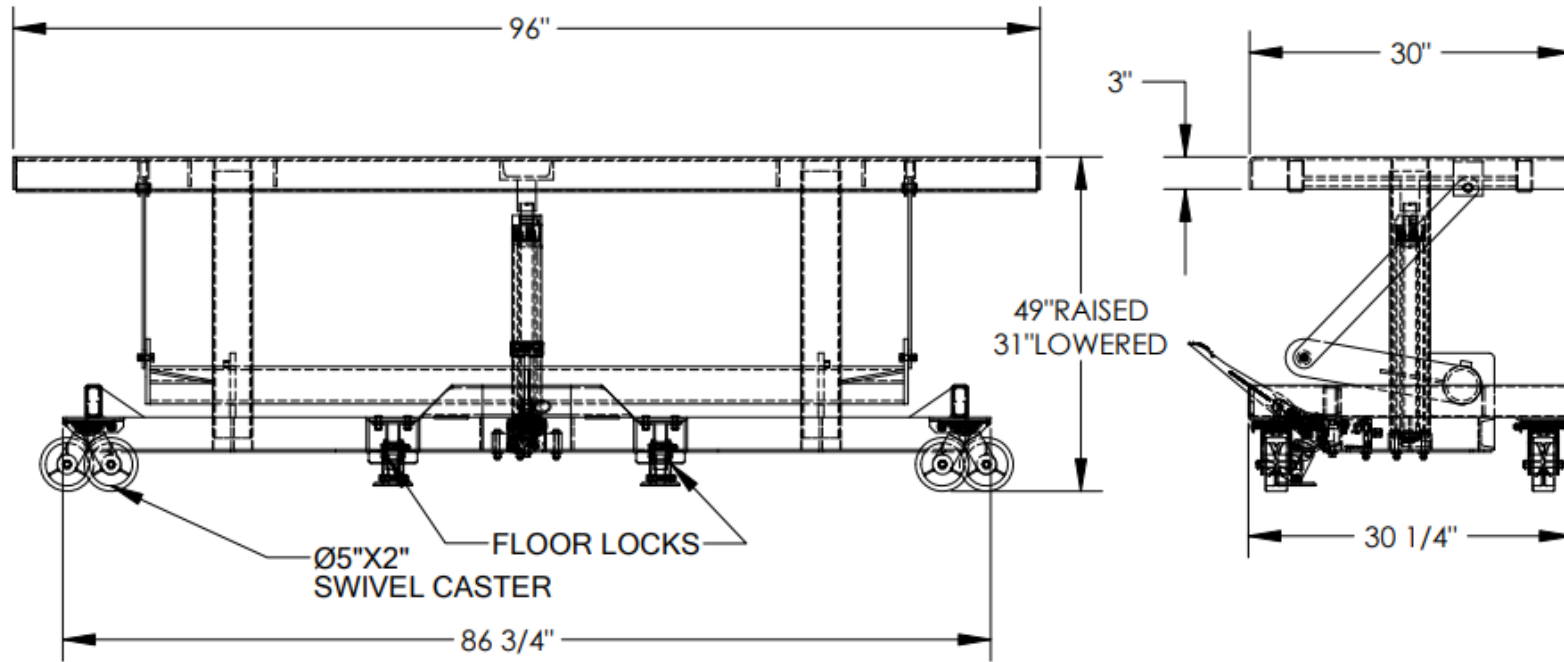


# LONG DECK CART - LDLT-3096-4

APPROX WEIGHT: 753.45 lbs.  
DOES NOT INCLUDE WEIGHT OF POWER OR PACKAGING!!!

\*\*\* ANY ADDITIONS, DELETIONS, OR OMISSIONS MUST BE CORRECTED ON THIS DRAWING AS THIS DRAWING WILL BE CONSIDERED ALL INCLUSIVE \*\*\*  
ALL GRAPHICS PROVIDED ARE FOR REFERENCE ONLY. IF CERTAIN DIMENSIONS ARE CRITICAL PLEASE VERIFY THOSE DIMENSIONS WITH YOUR SALESPERSON



DIMENSION TOLERANCE ± 1/4"

## STANDARD FEATURES

MODEL NUMBER IS LDLT-3096-4  
CAPACITY IS 4000 LBS. (EVENLY DISTRIBUTED)  
PLATFORM WIDTH IS 30"  
FRAME WIDTH IS 30 1/4"  
PLATFORM LENGTH IS 96"  
FRAME LENGTH IS 86 3/4"  
PLATFORM RAISED HEIGHT IS 49"  
PLATFORM LOWERED HEIGHT IS 31"  
FOUR SWIVEL 5"x2" POLY-ON-STEEL CASTERS  
DUAL FLOOR LOCKS  
MANUAL FOOT PUMP OPERATION  
LIQUID PAINTED BLUE FINISH

## SPECIAL FEATURES

NONE

APPROVAL

I, THE UNDERSIGNED, AGREE THAT THE PRODUCT AS REPRESENTED SATISFIES DESIGN AND DIMENSION REQUIREMENTS. I ALSO ACKNOWLEDGE MY DUTY TO CONFIRM PRODUCT AND INSTALLATION COMPLIANCE WITH ALL APPLICABLE FEDERAL, STATE AND LOCAL REGULATIONS AND STANDARDS.

**ANY MODIFIED UNITS ARE NON-RETURNABLE**

[ ] As drawn [ ] As marked

Signed: \_\_\_\_\_ Date: \_\_\_\_\_

Printed Name: \_\_\_\_\_

LEAD TIME WILL START UPON RECEIPT OF SIGNED APPROVAL DRAWING

FOR INTERNAL USE ONLY  
PROJECT SIGN OFF

SALES	
ENG.	
FAB.	
POWER	

DISTRIBUTOR'S NAME:		P.O.#	X
		W.O.#	X
DRAWN BY: SR		DATE:	10/26/06
REFERENCE: X		SCALE: 1:14	FILE NAME:
QUOTED LEAD TIME: X		QUOTE #	X
			21-007-125