



**GreenView**  
WINDOWS & DOORS

**New Generation  
7600 Easy Glide  
Insulated Sliding System**

**20 Ft Wide!**





### Structural Performance

Metal reinforced profiles enables the door system to be used in wide openings where the wind load requirement is high.



### Energy Performance

The 3" x 4 1/4" sash profile is available in single, dual and triple glazed glass combinations allowing for better energy performance.

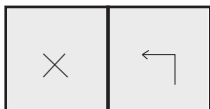


High impermeability due to circumferential gasket and active control of all locking points (also in the mullion) **provides strong performance against air, water and noise infiltration.**

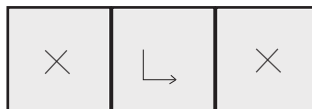


Innovative hardware design: convenient and easy operation with little effort due to closing motion across the frame profile

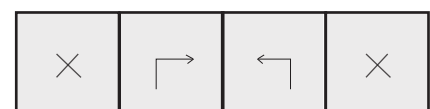
## Types of Openings:



2 Panel: 6000 x 3600mm / 236" x 141"



3 Panel: 6500 x 3600mm / 255" x 141"



4 Panel: 6500 x 3600mm / 255" x 141"

## 7600 EASY GLIDE TECHNICAL PROPERTIES

PERFORMANCE CLASSIFICATION LC/PG 40 SIZE TESTED 102" X 90"

### Properties

	Jamb Depth	5 3/4"
	Overall Thermal Thickness	15/16" to 2"
	Thermal Insulation (Uf) W/m²K	1.4 Dual Glazed
	Air Tightness	A3
	Wind Load Resistance	1920 Pa
	Watertightness	510 PA

## COLOUR OPTIONS

### PVC Profile Colours

White	Grey	Cream White

### Laminated Colour/Pattern Options

PX-20 Black Ulti-Matt	MX-92 Platin	MX-11 Gale Grey	MX-16 Anthracite Grey	MX-64 Quartz Grey
MX-21 Trompet	MX-15 Walnut	MX-24 Cottony	PX-98 Siena	MX-02 Dark Oak
MX-91 Soft Cherry	MX-04 Golden Oak	MX-23 Winchester	MX-14 Anteaek	FX-14 Aluminium Brush

\* Please contact our sales team for other laminated colour options.