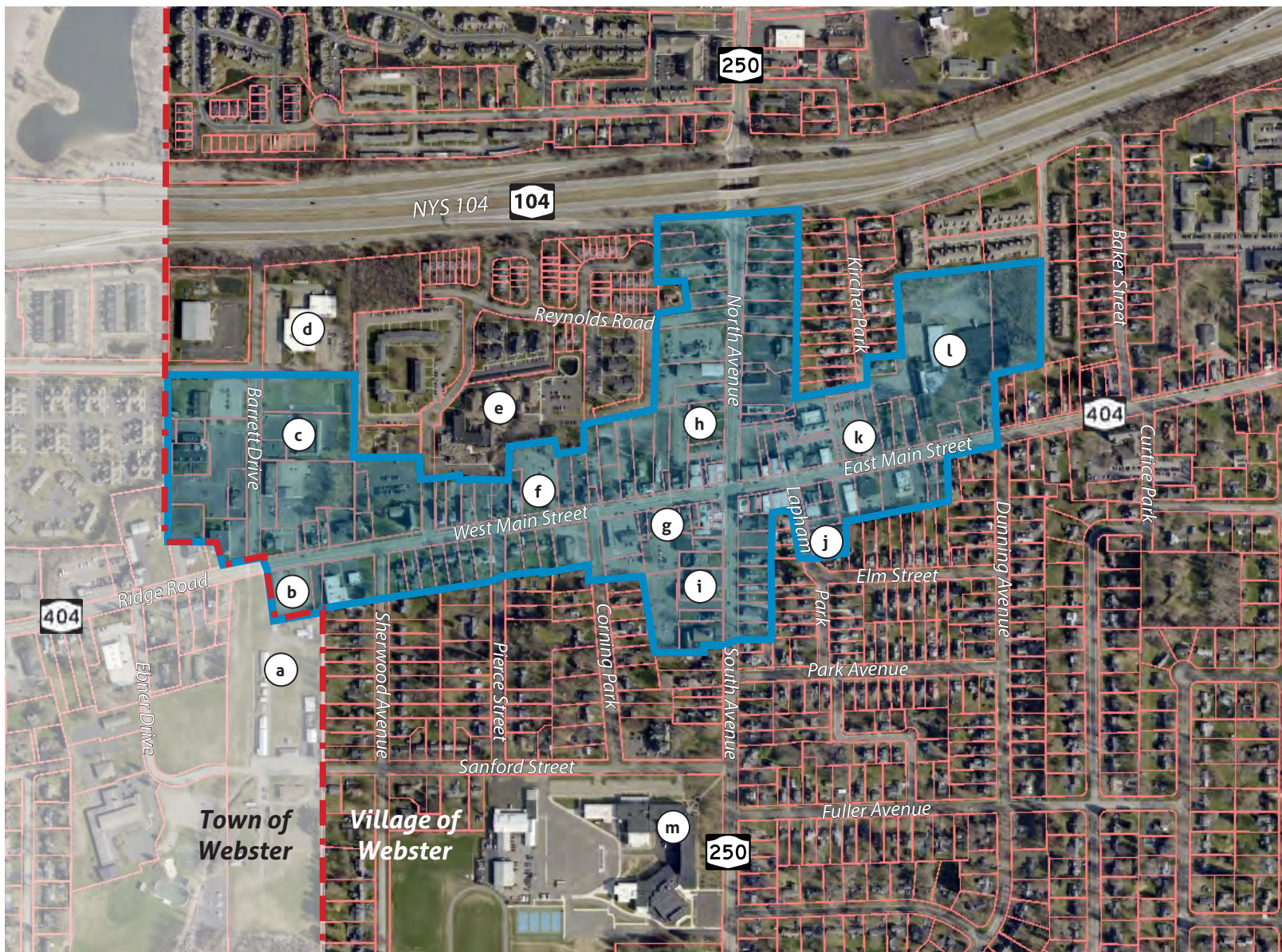


# NY Forward Boundary



## Boundary Description

The proposed NY Forward project area is centered on the Four Corners intersection of State Routes 404 (Main Street) and 250 and includes the entirety of the Village's Central Business District. The boundary stretches northward along Route 250 to the NY 104 interchange, and west along Main Street to the western gateway of the Village, and includes the majority of the West End Business District along Barrett Drive.

### Key Properties

- a. Fireman's Field
- b. Former McDonald's (vacant)
- c. UR Medicine Offices
- d. US Post Office
- e. Maplewood Nursing Home
- f. The Old Church Mall
- g. Village Hall
- h. Veteran's Memorial Park
- i. Webster Fire Hall
- j. Webster Museum
- k. Harmony House
- l. True North Packaging
- m. Spry Middle School