

CERTIFICATE OF ANALYSIS (SAMPLE ID: SA29553)

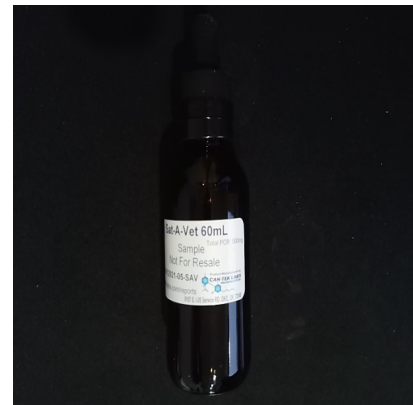
Testing Location:	Customer ID: 37	Order ID: OR9278	Sample Type: Primary
Arkansas	Can-Tek Labs	Lot Number:	Matrix: Oil/Tincture
232 S. Broadview St.	8107 S I-35 Service Rd	Not Entered	Mass: 60g
Greenbrier, AR 72058	Oklahoma City, OK 73149	Batch Number:	Date Collected: 01/29/2021
-	License: Not Entered or N/A	CTK-012921-05-SAV	Date Received: 02/10/2021

Cultivar (Strain) or Sample Description: Sat A Vet Large Breed Pet Tincture **Date Completed:** 02/11/2021

CANNABINOID (POTENCY) PROFILE

Analysis Date/Time: 2/10/2021 1709 **Method:** HPLC/DAD **Moisture Content (%):** -
Analyst: PW **Instrument:** Agilent 1100 **Water Activity (aw):** -

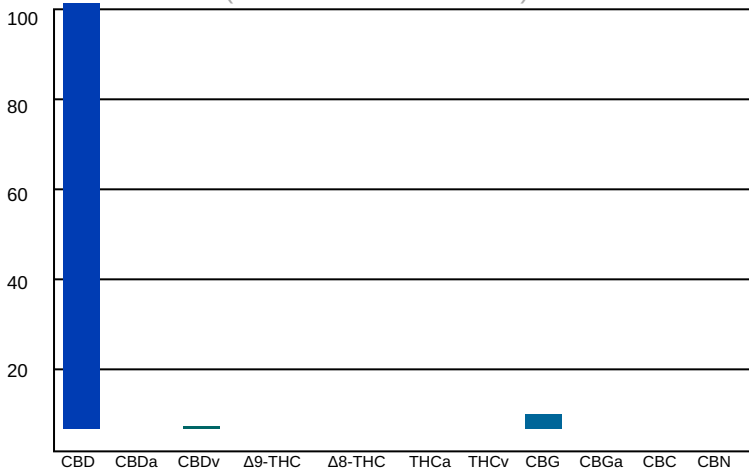
Cannabinoid	Result (%)	Result (mg/g)	Reporting Limit (mg/g)	Result (mg/mL)	Per Unit (mg)
CBD	0.984	10	0.00284	9.45	591
CBDa	-	-	0.00284	-	-
CBDv	0.0037	0.037	0.00284	0.0355	2
Δ9-THC	-	-	0.00284	-	-
Δ8-THC	-	-	0.00284	-	-
THCa	-	-	0.00284	-	-
THCv	-	-	0.00284	-	-
CBC	-	-	0.00284	-	-
CBG	0.032	0.32	0.00284	0.307	19
CBGa	-	-	0.00284	-	-
CBN	-	-	0.00284	-	-
TOTAL	1.02	10.2		9.79	612
TOTAL THC	-	-		-	-
TOTAL CBD	0.984	10		9.45	591



UNIT MASS (g): 60

"- " Not detected above RL.

Cannabinoid Distribution
(% of Total Cannabinoids)



Deviations from standard operating procedure: None

Recoveries for all analyte standards: 90-110%
Replicate Uncertainties: <5% RSD, <20% RPD
Sample/Reagent Blanks: <RL for all analytes

Values for plant matter are adjusted for moisture content.

Total THC = (THCa x 0.877) + Δ9-THC
 Total CBD = (CBDa x 0.877) + CBD

Percentage results are reported by mass.
 mg/g results are reported as mass component per mass material.

Abbreviations: UV - Ultraviolet, HPLC - High Pressure Liquid Chromatography, RL - Reporting Limit, RPD - Relative Percent Difference, RSD - Relative Standard Deviation

This information is provided as a service and makes no claims of efficacy and/or safety of this product. Results are applicable only for the sample(s) analyzed and for the specific analysis conducted. This report is for informational purposes only and should not be used to diagnose, treat, or prevent any medical-related symptoms. The statements and results herein have not been approved and/or endorsed by the FDA.

REPORT OF LABORATORY ANALYSIS

This report shall not be reproduced, except in full, without the written consent of Felling Analytical Services and Technology (F.A.S.T.), LLC

Kyle W. Felling
 Kyle W. Felling, Ph.D.
 Laboratory Director

