

CERTIFICATE OF ANALYSIS (SAMPLE ID: SA29663)

Testing Location:	Customer ID: 37	Order ID: OR9312	Sample Type: Primary
Arkansas	Can-Tek Labs	Lot Number:	Matrix: Oil/Tincture
232 S. Broadview St.	8107 S I-35 Service Rd	Not Entered	Mass: 60g
Greenbrier, AR 72058	Oklahoma City, OK 73149	Batch Number:	Date Collected: 03/16/2021
-	License: Not Entered or N/A	CTK-031621-01	Date Received: 03/21/2021
Cultivar (Strain) or Sample Description: 250mg Tincture 60ml			Date Completed: 03/26/2021

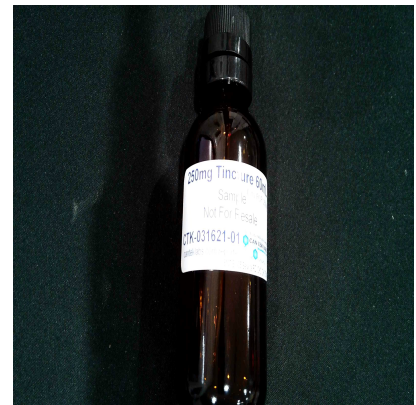
CANNABINOID (POTENCY) PROFILE

Analysis Date/Time: 3/22/2021 1358
Analyst: PW

Method: HPLC/DAD
Instrument: Agilent 1100

Moisture Content (%): -
Water Activity (aw): -

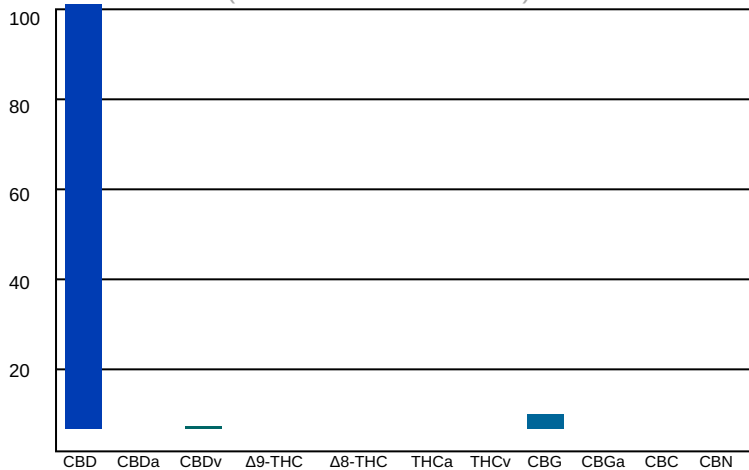
<u>Cannabinoid</u>	<u>Result (%)</u>	<u>Result (mg/g)</u>	<u>Reporting Limit (mg/g)</u>	<u>Result (mg/mL)</u>	<u>Per Unit (mg)</u>
CBD	0.542	5	0.00284	5.2	325
CBDa	-	-	0.00284	-	-
CBDv	0.00292	0.0292	0.00284	0.028	1.75
Δ9-THC	-	-	0.00284	-	-
Δ8-THC	-	-	0.00284	-	-
THCa	-	-	0.00284	-	-
THCv	-	-	0.00284	-	-
CBC	-	-	0.00284	-	-
CBG	0.0181	0.181	0.00284	0.174	10.9
CBGa	-	-	0.00284	-	-
CBN	-	-	0.00284	-	-
TOTAL	0.563	6		5.41	338
TOTAL THC	-	-		-	-
TOTAL CBD	0.542	5		5.2	325



UNIT MASS (g): 60

"-" Not detected above RL.

Cannabinoid Distribution (% of Total Cannabinoids)



Deviations from standard operating procedure: None

Recoveries for all analyte standards: 90-110%
Replicate Uncertainties: <5% RSD, <20% RPD
Sample/Reagent Blanks: <RL for all analytes

Values for plant matter are adjusted for moisture content.

Total THC = (THCa x 0.877) + Δ9-THC
Total CBD = (CBDa x 0.877) + CBD

Percentage results are reported by mass.
mg/g results are reported as mass component per mass material.

Abbreviations: UV - Ultraviolet, HPLC - High Pressure Liquid Chromatography, RL - Reporting Limit, RPD - Relative Percent Difference, RSD - Relative Standard Deviation

This information is provided as a service and makes no claims of efficacy and/or safety of this product. Results are applicable only for the sample(s) analyzed and for the specific analysis conducted. This report is for informational purposes only and should not be used to diagnose, treat, or prevent any medical-related symptoms. The statements and results herein have not been approved and/or endorsed by the FDA.

REPORT OF LABORATORY ANALYSIS

This report shall not be reproduced, except in full, without the written consent of
Felling Analytical Services and Technology (F.A.S.T.), LLC

www.FASTLaboratories.com

Kyle W. Felling
Kyle W. Felling, Ph.D.
Laboratory Director

