

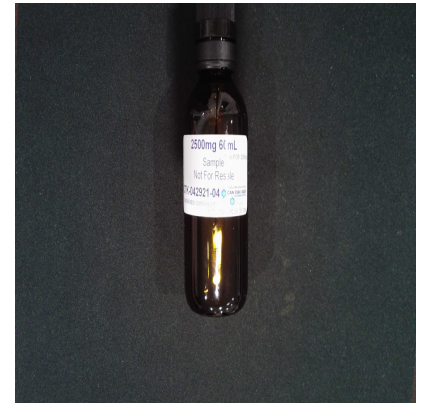
CERTIFICATE OF ANALYSIS (SAMPLE ID: SA29814)

Testing Location:	Customer ID: 37	Order ID: OR9363	Sample Type: Primary
Arkansas	Can-Tek Labs	Lot Number:	Matrix: Oil/Tincture
232 S. Broadview St.	8107 S I-35 Service Rd	Not Entered	Mass: 60g
Greenbrier, AR 72058	Oklahoma City, OK 73149	Batch Number:	Date Collected: 04/29/2021
License: ADA 05_H273	License: Not Entered or N/A	CTK-042921-04	Date Received: 05/06/2021
Cultivar (Strain) or Sample Description: PCX 2500mg Tincture 60ml			Date Completed: 05/07/2021

CANNABINOID (POTENCY) PROFILE (SOP: SOP-CANN-001)

Analysis Date/Time: 5/6/2021 1329 **Method:** HPLC/DAD **Moisture Content (%):** -
Analyst: PW **Instrument:** Agilent 1100 **Water Activity (aw):** -

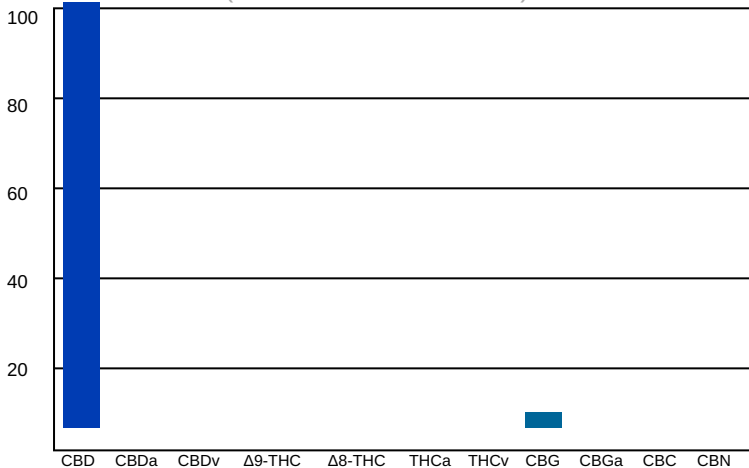
Cannabinoid	Result (%)	Result (mg/g)	Reporting Limit (mg/g)	Result (mg/mL)	Per Serving (mg)	Per Unit (mg)
CBD	4.5	45	1.55	43.2	45	2698
CBDa	-	-	0.155	-	-	-
CBDv	-	-	0.155	-	-	-
Δ9-THC	-	-	0.155	-	-	-
Δ8-THC	-	-	0.155	-	-	-
THCa	-	-	0.155	-	-	-
THCv	-	-	0.155	-	-	-
CBC	-	-	0.155	-	-	-
CBG	0.156	1.56	0.155	1.49	1.56	93
CBGa	-	-	0.155	-	-	-
CBN	-	-	0.155	-	-	-
TOTAL	4.65	47		44.7	47	2792
TOTAL THC	-	-		-	-	-
TOTAL CBD	4.5	45		43.2	45	2698



SERVING MASS (g): 1
SERVINGS/UNIT: 60

"-" Not detected above RL.

Cannabinoid Distribution
(% of Total Cannabinoids)



Deviations from standard operating procedure: None

*Recoveries for all analyte standards: 90-110%
 Replicate Uncertainties: <5% RSD, <20% RPD
 Sample/Reagent Blanks: <RL for all analytes*

Values for plant matter are adjusted for moisture content.

Total THC = (THCa x 0.877) + Δ9-THC
 Total CBD = (CBDa x 0.877) + CBD

Percentage results are reported by mass.
 mg/g results are reported as mass component per mass material.

Abbreviations: DAD - Diode Array Detector, HPLC - High Pressure Liquid Chromatography, RL - Reporting Limit, RPD - Relative Percent Difference, RSD - Relative Standard Deviation

This information is provided as a service and makes no claims of efficacy and/or safety of this product. Results are applicable only for the sample(s) analyzed and for the specific analysis conducted. This report is for informational purposes only and should not be used to diagnose, treat, or prevent any medical-related symptoms. The statements and results herein have not been approved and/or endorsed by the FDA.

REPORT OF LABORATORY ANALYSIS

This report shall not be reproduced, except in full, without the written consent of
 Felling Analytical Services and Technology (F.A.S.T.), LLC



Kyle W. Felling
 Kyle W. Felling, Ph.D.
 Laboratory Director