

CERTIFICATE OF ANALYSIS (SAMPLE ID: SA29404)

Testing Location:	Customer ID: 37	Order ID: OR9216	Sample Type: Primary
Arkansas	Can-Tek Labs	Lot Number:	Matrix: Oil/Tincture
232 S. Broadview St.	8107 S I-35 Service Rd	Not Entered	Mass: 30g
Greenbrier, AR 72058	Oklahoma City, OK 73149	Batch Number:	Date Collected: 12/09/2020
-	License: Not Entered or N/A	CTK-120920-04	Date Received: 12/15/2020
Cultivar (Strain) or Sample Description: PCRX Gold Tincture 20mg/ml			Date Completed: 12/21/2020

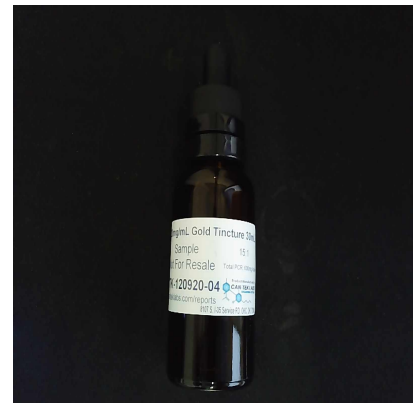
CANNABINOID (POTENCY) PROFILE

Analysis Date/Time: 12/16/2020 1111
Analyst: PW

Method: HPLC/DAD
Instrument: Agilent 1100

Moisture Content (%): -
Water Activity (aw): -

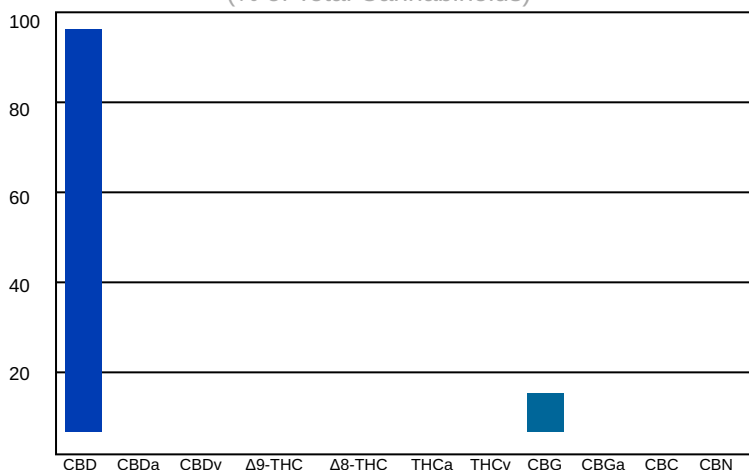
<u>Cannabinoid</u>	<u>Result (%)</u>	<u>Result (mg/g)</u>	<u>Reporting Limit (mg/g)</u>	<u>Result (mg/mL)</u>	<u>Per Unit (mg)</u>
CBD	1.95	19	0.0279	18.7	584
CBDa	-	-	0.0279	-	-
CBDv	-	-	0.0279	-	-
Δ9-THC	-	-	0.0279	-	-
Δ8-THC	-	-	0.0279	-	-
THCa	-	-	0.0279	-	-
THCv	-	-	0.0279	-	-
CBC	-	-	0.0279	-	-
CBG	0.183	1.83	0.0279	1.75	55
CBGa	-	-	0.0279	-	-
CBN	-	-	0.0279	-	-
TOTAL	2.13	21		20.5	639
TOTAL THC	-	-		-	-
TOTAL CBD	1.95	19		18.7	584



UNIT MASS (g): 30

"-" Not detected above RL.

Cannabinoid Distribution (% of Total Cannabinoids)



Deviations from standard operating procedure: None

Recoveries for all analyte standards: 90-110%
Replicate Uncertainties: <5% RSD, <20% RPD
Sample/Reagent Blanks: <RL for all analytes

Values for plant matter are adjusted for moisture content.

Total THC = (THCa x 0.877) + Δ9-THC
Total CBD = (CBDa x 0.877) + CBD

Percentage results are reported by mass.
mg/g results are reported as mass component per mass material.

Abbreviations: UV - Ultraviolet, HPLC - High Pressure Liquid Chromatography, RL - Reporting Limit, RPD - Relative Percent Difference, RSD - Relative Standard Deviation

This information is provided as a service and makes no claims of efficacy and/or safety of this product. Results are applicable only for the sample(s) analyzed and for the specific analysis conducted. This report is for informational purposes only and should not be used to diagnose, treat, or prevent any medical-related symptoms. The statements and results herein have not been approved and/or endorsed by the FDA.

REPORT OF LABORATORY ANALYSIS

This report shall not be reproduced, except in full, without the written consent of
Felling Analytical Services and Technology (F.A.S.T.), LLC

Kyle W. Felling
Kyle W. Felling, Ph.D.
Laboratory Director

www.FASTLaboratories.com

