

# UNIVERSAL ROCKS

## ***Pool Waterfall Install Guide***

Tools & Hardware Required: This may vary depending on which waterfall you have.

3" Exterior  
Deck Screws

3/8"  
Concrete Drill  
Bit (no shorter  
than 6")

6-10' of 2"  
Spa Flex

Appropriate  
Size Coupling  
& SCH 40

3/8" Wide Anchors  
x 3" Long  
Wedge Anchors

PVC Cutters or  
Sawzall

Carpenter Pencils  
or Chalk

Hand Drill or  
Impact Drill

Hammer

x14 or more  
Pressure Treated  
2x4 Blocks  
(8" Long)

PVC Glue  
& Cleaner

Hammer Drill

Sharp Straight  
Edge Knife

UR Touch Up Kit

Now that you have all of your supplies to complete this installation,  
follow the instructions below.

(steps may vary depending on which waterfall you have and the curve of your pool.)



2" PVC pipe should be  
coming out of the ground.  
Cut if needed - Leave about 6" - 8".



Place waterfall and rocks  
where you would like to install it  
- over the 2" pipe.



If gap is visible on the sides,  
you will need to modify it.



Figure out where the rock edge  
touches the coping and  
even it out by cutting the rock  
with a sharp knife.



Check to see if it fits the  
coping evenly.  
If not, continue cutting.

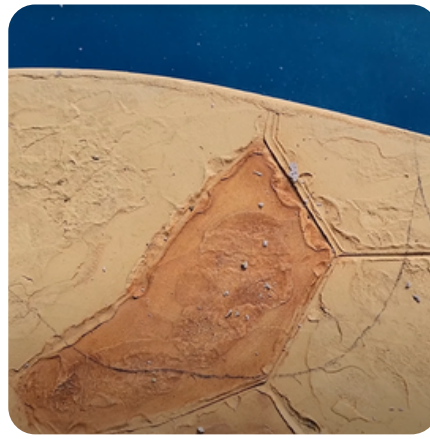


Once you like where all  
the rocks are placed.  
Outline around the rocks using  
chalk or pencil.





After you have outlined the rocks in their correct place.  
Flip the rocks over, placing them behind the outlines.



This is what your outlines should look like.



Now you will place the blocks down where you will be screwing them into the concrete.  
( 3 x blocks per edge rock, and 5 or more for your waterfall.)



You will now drill two holes on each block and through the concrete.



Vacuum up the excess dust from the wood blocks and the holes after you have finished drilling.



Line up your holes and hammer down the bolts into the holes you created.



With an impact drill, you are going to fasten the nuts down on the bolts.



You will now draw lines outward from the blocks, so you know where to put your screws.



Prep PVC fittings and Flex Pipe to test everything will line up.





Depending on the size of the flex pipe, you will need to get the appropriate size coupling to make it fit in the elbow opening.



This is an example of a 1" flex pipe attached to a 2" reducer coupling.



You will now clean and glue both the coupling & elbow, now place coupling into the elbow.



Hold down the glued coupling for 10 + seconds.



Now place the glued elbow onto the stubbed up PVC pipe. Make sure to twist 1/4 turn to let out all the air bubbles within.



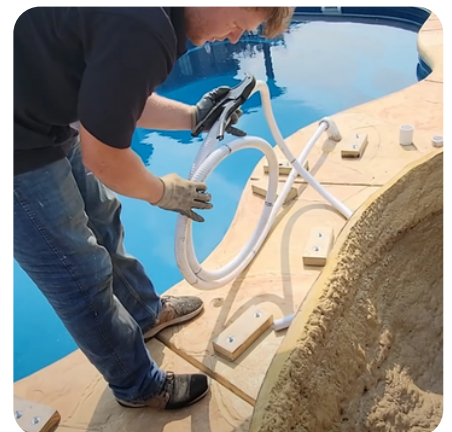
You will then glue the flex pipe to the coupling inside of the elbow.



Clean and glue waterfall fitting as well as the other coupling.



Hold down coupling in waterfall fitting for 10 + seconds.



Next, you will figure out how much flex pipe you will need. Enough to make a loop like the image above.





Cut off the excess flex pipe.



Glue flex pipe into coupling/fitting.



Put all flex pipe inside of waterfall and flip waterfall and rocks over. Place them over the mounted blocks.



Now you will screw from the outside of the rocks, directly into the blocks underneath.  
(Hint: using your lines beforehand.)



You will now put silicone/ M-1 around the edges and screw heads.



Use a glove to spread the silicone evenly.



Grab the paint brush and dip into the powder coloring and directly apply onto the spread silicone, camouflaging the spots.



Vacuum excess coloring.



Landscape around your pool, turn on your pool-waterfall return line at your equipment and Ta-dah!