

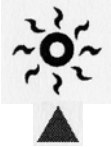
ECONOMY SERIES CONTROL OPERATION GUIDE



Pump 1: press Pump1 key to turn Pump 1 on. Press a second time to change the pump speed. A third time turns pump off. A built-in timer automatically turns pump off after 20 minutes, unless it has been manually deactivated. The “pump 1” indicator lights up when Pump 1 is on.



Pump 2: press Pump2 key to turn Pump 2 on. Pressing a second time turns pump off. A built-in timer automatically turns pump off after 20 minutes, unless manually deactivated. The “pump 2” indicator lights up when Pump 2 is on.



Light: Turning the light(s) on—(depending on your spa configuration) Spa Light Only—Press Light key to turn light on. Press a second time to turn light off. Spa Light—The “light” indicator lights up when the light is on. Spa Light is also used as a program function.



Temperature: Setting water temperature: Use Up/Down arrow key to regulate water temperature. Press and hold key to increase (or decrease) current temperature setting. The temperature setting will be displayed for 5 seconds to confirm your new selection.

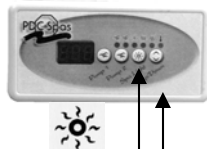


The “Set Point” indicator displays the desired temperature, NOT the current temperature! Water temperature can be adjusted by 1° increments from 59° to 104° F (15-40°C).

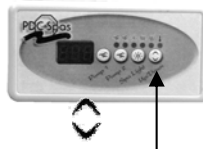


Automatic water heater start: When water temperature is 1°F (0.5°C) lower than the Set Point, the heater will automatically turn on until water temperature reaches Set Point plus 1°F(0.5°C). The “heater” indicator lights up when the heater is on.

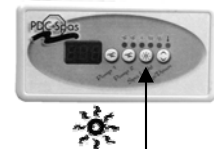
Programming the filter cycle duration: The system automatically performs two filter cycles per day, at 12 hour intervals. During a filter cycle, pumps are activated for a programmed number of hours. To set the filter cycle duration:



Press, hold Light key for 5 seconds. Display will show a value representing the filter cycle duration in hours.

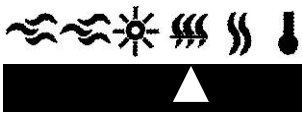


Use Up/Down arrow key to change setting. 0=no, 12=continuous filtration.

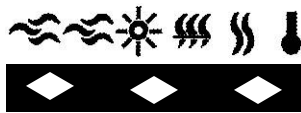


When desired setting is displayed, press light key again, filter cycle begins. The “filter” indicator lights.

TROUBLESHOOTING:



A: Pumps have started for 1 minute on several occasions and “Filter” indicator flashes. This is the Smart Winter Mode protecting your spa from the cold by turning pumps on for 1 minute several times a day to prevent freezing pipes.



C: 3 flashing dots are displayed. A problem has been detected. Do NOT enter the spa! Check and open water valves. Clean filter if necessary. Check water level and add if needed. Shut power off and power spa up again to reset system.



D: Water temperature is flashing. Water temperature has reached 112°F(44°C). Do NOT enter the spa! Remove spa cover and allow water to cool. The system will reset itself when temp reaches 109°F(43°C).

B: The display is flashing. A power failure has occurred. Press any key to stop the flashing and reprogram filter cycle.

Call you service supplier if problem persists.

Call your service supplier if problem persists.



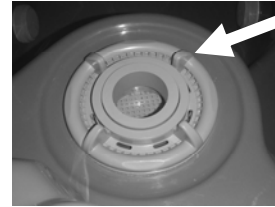
AT SERIES PORTABLE SPAS

FILTER MAINTENANCE

Your new spa hot tub is equipped with a suction side filter for optimum water sanitation and ease of maintenance. Follow the simple steps below for routine cleaning.

1. Shut the power off to the spa at either the main or sub panel.

2. Remove the top by using the raised portions of the filter top and turning it counter clockwise. After top stops turning lift up to remove top from filter.



3. Lift the skimmer basket out of the filter canister.



4. Remove the filter from the canister.



5. Replace with clean filter.



6. Place skimmer basket back in filter canister.



7. Place filter top onto filter canister and turn the top clockwise until it stops.



Routinely test the GFCI on your spa unit; at least monthly. Refer to the Owners Manual for simple guidelines and contact a licensed electrician regarding questions or concerns.