

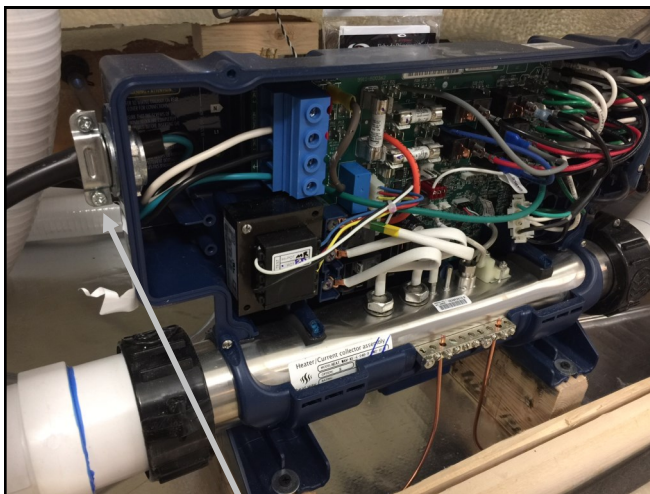


Steps for Powering-Up Dry Display Spa

Your 2017 PDC Showroom model spa can be powered-up dry to showcase the lights and stereo system. The unit will need to be supplied with 120V power.

In most cases an extension cord with a molded 3 prong plug can be used, but if the powered dry spa is positioned within 15 feet of a water source, such as a wet running spa, a GFCI (Ground Fault Circuit Interrupter Protection) plug must be used. Follow the steps below to complete the power-up.

1. Determine which side of the spa has the electrical pack and remove the cabinet panel.
2. Remove the cover from the spa pack .
3. Install a strain relief in the spa pack. Then route the cord with a 120V male plug through the strain relief. The wire size of the cord should be #14 wire with ground. Tighten the strain relief.
4. Strip 1" of insulation from each wire then connect the wire to the spa pack following the color code on the terminal block. (Note: The red labeled terminal will not be used.)
5. Replace the spa pack cover.
6. Route the wire out one of the corners of the spa.
7. Replace the cabinet panel.
8. Plug cord into outlet. If dry spa is within 15 feet of water, such as a wet running spa, you must switch the male end of the cord to a GFCI, Ground Fault Circuit Interrupter, 120V plug.
9. This plug must be removed prior to installation in the field.



strain relief



GFCI, 120V, plug