

STEAKAGER

PRO 40 USER GUIDE

Congratulations on your purchase and welcome to the SteakAger family!

Every SteakAger product comes with a 1-year parts and labor warranty, effective as of original purchase date. Please retain proof of purchase to obtain service under this warranty.



Please join us on our Facebook page :
THE OFFICIAL STEAKAGER OWNERS GROUP



READ ALL INSTRUCTIONS BEFORE USE

For your safety and continued enjoyment of this product, always read the instruction manual before using.

INITIAL SETUP

FEATURES AND FUNCTIONS

First Time Operating Instructions

- Let the unit sit for 24 hours before plugging in the power cable and turning on.
- Be sure to remove all packaging inside and outside.
- **DO NOT** load your PRO 40 until it reaches 34F-39F (1C-3C).
- **Caution :** We do not recommend using extension cords. If you must use an extension cord make sure it is UL/CUL, 3-wire grounding type appliance extension cord having a grounding type plug and outlet and that the electrical rating of the cord be 115 volts and at least 10 amperes.
- **IMPORTANT :** Two plugs are provided for the operation of your PRO series SteakAger. The main plug for the refrigerator and one 12V plug for SteakAger electronics control unit. Both **MUST** be plugged in for full operation.

12VDC PLUG

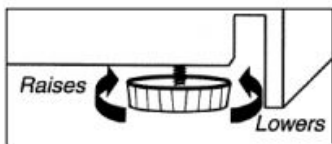


120VAC PLUG



Leveling your PRO 40

- Move your PRO 40 to its final destination.
- Have someone gently lean on the front of the PRO 40 to take some of the weight off of the leveling leg.
- Turn the leveling leg clockwise to raise, and counter-clockwise to lower the PRO 40. Continue in this manner until the PRO 40 is level. Its best to ensure the appliance is tilted slightly to the rear for draining of water.



APP SETUP

CLEANING AND MAINTENANCE

Cleaning and Removal

- Unplug the Extension Connector by carefully pulling out the 5.5mm jack out of the connection location on the front of the Back Plate Insert.
- Remove the Back Plate Insert by lifting up and pulling out to lift it out of the rear slot pockets.
- Clean the Rack by wiping it with a damp cloth. Wipe dry with a dry cloth and reinsert.
- **Note :** All parts of the unit are 304 stainless steel and are easily cleaned with warm sudsy water. The hooks can be cleaned in the dishwasher.

Connecting to your SteakAger

- Download the SteakAger App from the App Store or Google Play for free.
- Make sure your appliance is plugged in and running.
- Follow the below App instructions for either iOS, Android.

• WiFi Connection :

- **** NOTE :** If connecting through WiFi you will need to set up and account. Make sure to confirm the account with the confirmation email before trying to sign in.

After opening the app press "Connect to SteakAger". You will then be prompted to select "Wifi Connection" or "Bluetooth Connection". Press "Wifi Connection" and enter your credentials. If you have already created an account, enter your credentials and press login. If you have not created an account press create account and enter your information.

- After signing in through WiFi you will need to go into the Settings (Gear Icon) and go into WiFi configuration to select the network and enter your password.
- If you receive an error message "Please wait 4 minutes for data to load", you may have entered the incorrect information or your ager is not connecting to your network properly.

• Bluetooth Connection :

- When connecting through bluetooth you do not need a login to access your SteakAger. This is the easiest and quickest way to setup and view your SteakAger data.

After opening the App press "Connect to SteakAger" you will then be prompted to select "Wifi Connection" or "Bluetooth Connection". Press "Bluetooth Connection" and you will be immediately redirected to your home screen.

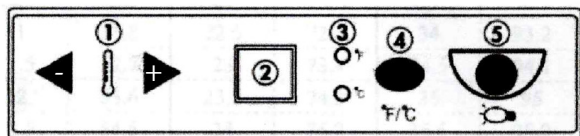
- If you receive any error messages once connected, "Please wait 4 minutes for data to load". Your unit may not be plugged in or connecting properly. If you are unable to resolve the issue with the troubleshooting guide, contact us at www.TheSteakAger.com

TEMPERATURE CONTROL

OPERATING INSTRUCTIONS

Temperature Controls and Settings

Once you have completed the setup and assembly instructions for your new PRO 40 SteakAger, follow the instructions below to set and adjust temperatures.



- With the 120vac power plugged into the wall you will see the display on the interior top of your SteakAger turn on.

1. To adjust the temperature you will use the + and - arrows (Number 1 on the above diagram) to move up and down.

- For **Dry Aging**, we recommend setting the temperature to read 40F as the set temperature is the upper limit and will cycle down to average 37F

- For **Charcuterie**, we recommend setting the temperature to read 59F to give you an average temperature of 55F.

2. The readout on the controls head shows the set temperature of the unit. If the readout displays 40F, this means that the fridge will cycle below this number from 33F to 40F.

4. Changing between Celsius and Fahrenheit can be done by pressing button number 4 on the above diagram and is indicated by a light beside the corresponding call out.

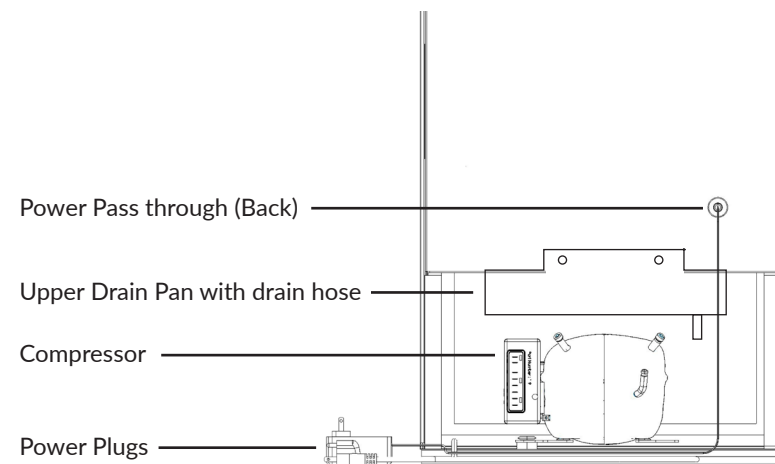
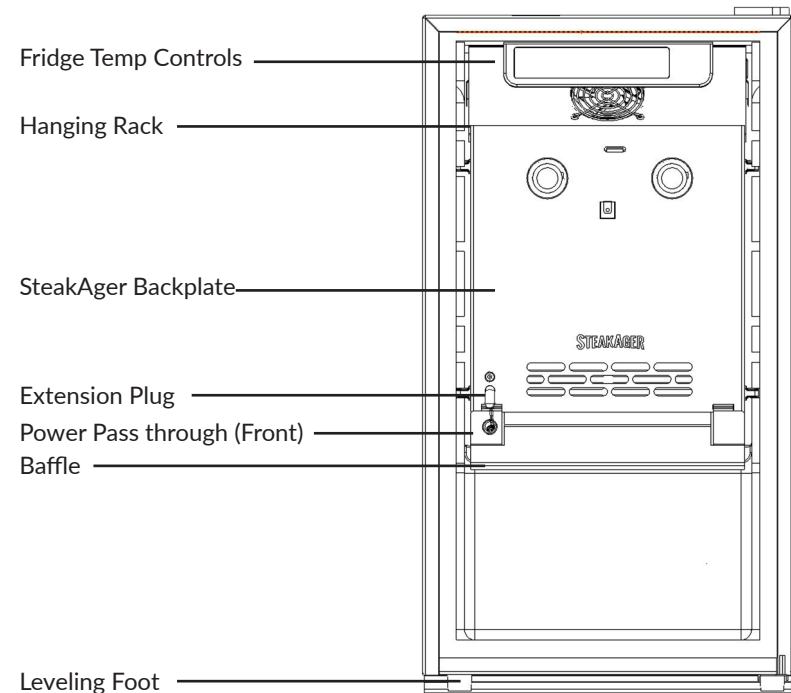
5. Toggling the interior blue light ON and OFF can be done by pressing button number 5 on the interface diagram above. This is just an interior light and is not the UVC light in the unit. The UVC light is built into the Back Plate of the unit.

***Note that depending on the climate that you live these number may need to be adjusted up or down. We always recommend our units be used inside of a climate controlled area for optimal functionality.*

ASSEMBLY LAYOUT

FEATURES AND FUNCTIONS

Pro 40 Parts Layout and Assembly



PARTS LIST

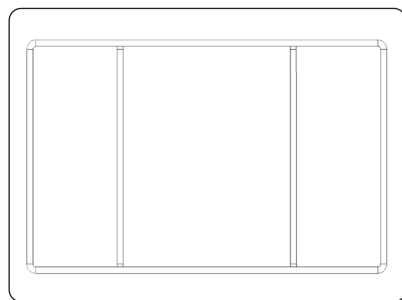
FEATURES AND FUNCTIONS

Unboxing and Parts List

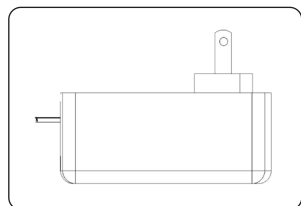
When unboxing your SteakAger Pro 40 check to be sure that the below components are supplied.



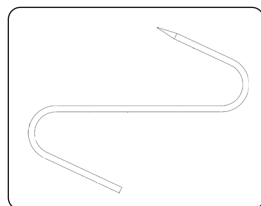
Back Plate Insert



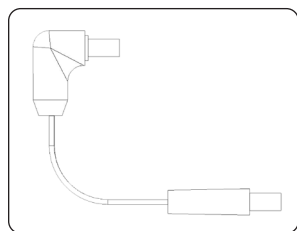
Hanging Rack



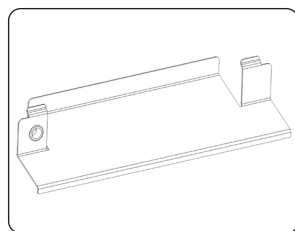
Power Supply
12vdc



Meat Hook
(x2)



Extension
Connector



Baffle

PRO 40 ASSEMBLY

OPERATING INSTRUCTIONS

PRO 40 Drain Pan Install

Upon receiving and unpacking your Pro 40 Steakager, you will have a black 1/6 pan (refer to lower image) wrapped in bubble wrap on the interior of the fridge.

1. Remove this and unpack the pan from the packaging materials.
2. Go the rear of the fridge and you will see a hose coming off of the black pan above the compressor.
3. Pull out the hose and route it to the drain pan. This will allow for the water to drain into an external previous for easy dumping when necessary.

- When doing dry-aging you will have the most water drainage in the first 1-2 weeks as the most moisture is being removed from the meat. Its recommended to heck the drain pan every couple days in these first 1-2 weeks. After those initial 1-2 weeks you can go longer before checking the pan.

- When doing charcuterie, the fridge will constantly be removing moisture sine you are running at a higher temperature and usually have a higher moisture content. Checking the pan every couple days throughout the curing process is recommended.

PRO 40 Drain Pan Troubleshooting

- If you find that there is water leaking from the upper drain pan that is above the compressor or from the fitting at the hose, below are a few troubleshooting steps.
- Check that the upper drain pan above the compressor isnt full and over flowing, this could indicate that the hose is clogged and not draining properly.
- If you see water leaking from the bulk head fitting that connects to the upper drain pan above the compressor, the fitting could not be sealed all the way. You can remove the 2 screws holding on the drain pan and tighten up the fitting. You can also try to push the hose further into the fitting it could just not be seated all the way.



1/6 Drain Pan

PURCHASED UPGRADES

OPERATING INSTRUCTIONS

Pro 40 Humidification Unit Details and troubleshooting

When Installing your Humidification unit in your Pro 40 follow the installation instructions to insure your installation is correct. If the below instructions do not help you can email info@steakager.com for further help.

Pro 40 Humidification Unit Troubleshooting and Details

- The Humidification unit is designed to run on the algorithm of the control board in the backplate. The humidifier will not turn on for the first hour of operation while it collects data. After the first hour, if it sees an AVERAGE humidity below 75% it will turn on, if it sees an AVERAGE humidity below 75% it will stay on. Once the humidifier turns on, if the AVERAGE humidity rises above 75% for longer than 1 hour it will turn back off, when the AVERAGE humidity drops back below 75% for longer than 1 hour it will turn back on. This process will help to maintain the perfect 75% humidity AVERAGE. If you find that your Humidification unit is running while your Steakager App is showing an AVERAGE humidity higher than 75% you could have the plug in the wrong power port.

- If its plugged into the correct port, but you are not seeing it turn on, we recommend unplugging the backplate (MAIN POWER) for 5 minutes and then plugging it back in . This will reset the firmware and allow a fresh restart.

- We recommend not using an external Temperature/Humidity sensor to judge the performance of the humidifier as there are always discrepancies across sensors and the algorithm that runs the humidifier is based off on what our sensor is seeing.

- When filling the water resevoir we recommend using distilled water.

- The Humidification unit is not designed to have the truss rack sit on it. If you are planning on using Vertical Truss Racks inside your Pro 40 it is required to also use the Truss Rack Shelf for them to sit on.

- If you are seeing that your Humidification unit is running but your humidity inside the unit is not rising, you may need to fill your water resevoir. If the water is filled and the Humidifier is running, but your humidity isn't going up you may need to contact info@steakager.com to get further assistance.

- The humidity of your Pro 40 will show swings up and down as the compressor turns on and off to cycle temperature, but you only need to pay attention to the AVERAGE readings.

PRO 40 ASSEMBLY

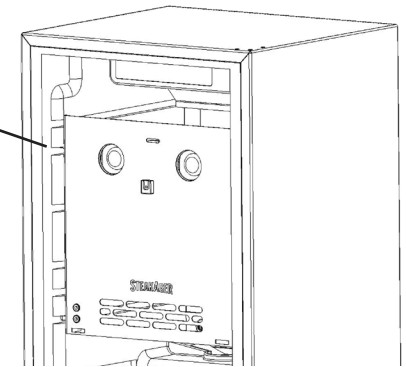
OPERATING INSTRUCTIONS

PRO 40 Assembly Guide

Owners of the Standard PRO 40 unit will receive the fridge shipping box with the SteakAger accessory box attached. Please separate the accessory box from the outer fridge and follow the steps below.

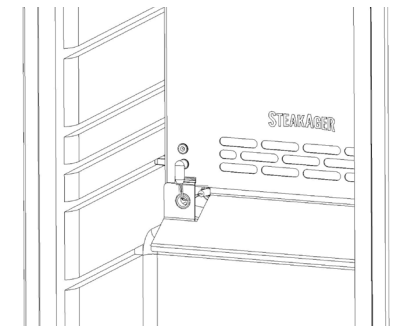
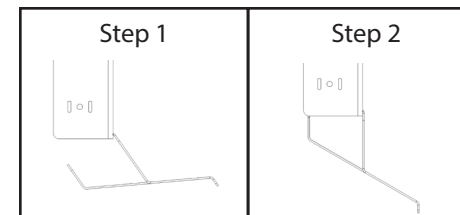
1. Remove all packing materials that enclose the fridge, then remove all packaging materials from the interior of the unit. Remove all beverage racks and store or dispose. DO NOT use beverage racks (Black Racks) for meat aging the rubberized coating is not food safe rated, these are for beverage storage ONLY.
2. Open the SteakAger accessory box and locate the Backplate Insert, Baffle, Hanging Rack, Hooks, Power Supply, and Extension Connector.
3. Slide in the SteakAger Backplate Insert making sure to use the second highest rack slot from the top. (Refer to the below image). Push the Backplate Insert to the back until you feel it seat in the pocket at the back of the rack slot. (You will feel a slight "ca-chunk" when it rests in place)

Use this rack slot as top slot when inserting Backplate

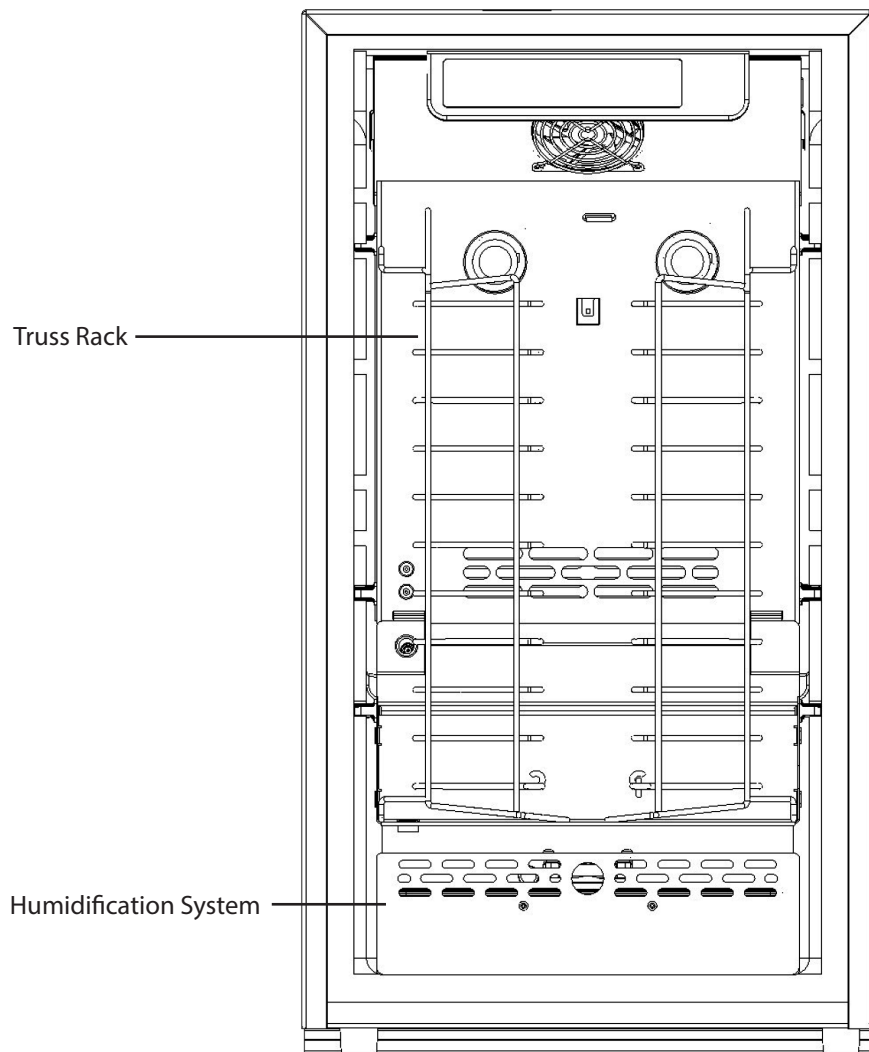


4. Locate the Baffle and install it using the tabs to lock in into place on the Back Plate. When installing the Baffle, you will first want to run the Extension Cable through the wire grommet and plug it into the Power Pass Through on the fridge. With the Extension Cable plugged into the Power Pass Through lock in the Baffle using the tabs and slots on the Back Plate. Once locked in place, plug in the Extension Cable into the lower most plug on the Back Plate.

The plug has one 90 degree elbow and one straight end. The 90 degree goes to the Back Plate and the straight end goes to the Power Pass

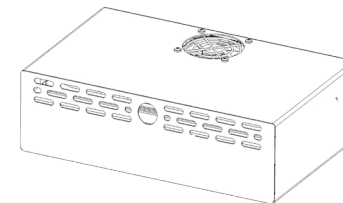


Truss Rack and Humidification Upgrade Assembly

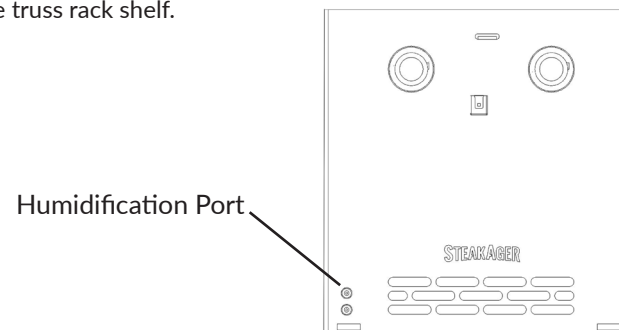


PRO 40 Humidification Unit Assembly

1. When you receive your Humidification upgrade, it will come fully assembled and ready to run. You will just need to fill the water tray up to the 1.5Q mark and then slide the tray back into the assembly. The cover can either be fully removed by lifting the cover all the way up or it can be rotated out of the way for quick loading.



2. There will be a cable coming from the back of the assembly, this will need to be plugged into the Top most plug location on the Back Plate. If it is not plugged into the top most plug it will not function properly. If you are installing this with the truss rack shelf you will need to feed the wire up through the grommet on the left side of the truss rack shelf.



Pro 40 Humidification Unit Install Details

- Slide the humidification unit into the Pro 40 at the bottom of the fridge. If you are using a Truss Rack Shelf you must first have the Truss Rack Shelf installed or you will not be able to get the Humidification unit past the grommet on the Truss Rack Shelf. When sliding it in with the Truss Rack Shelf be sure to feed the power wire through the grommet on the Truss Rack Shelf and then plug it into the top most power port on the backplate. It must be plugged into this port or it will not function properly.

- You will see that there is a black pan included with the Humidification unit. This must remained filled with water for full operation of the humidifier. You do not need to remove the entire unit to fill the pan, just fold up the door and remove to refill. Distilled water is recommended.