

Billboard

Newsletter of the Bonsai Society of Upstate NY



From our President

Greetings Friends,

The 9th US National Bonsai Exhibition is now in the books as we say and now our memories and the Exhibition Album with Joe Noga's photos will stand as a testament to the enormous effort by all involved. A special thanks to Bill for his unrelenting dedication to this monument to Bonsai in America!

The Bonsai Society of Upstate New York has not only been a sponsor but a major contributor to these historic events as well. Thank you to everyone who volunteered their time, talents and resources to make it the success it was! Congratulations to the American Bonsai Society as both the Learning Seminars and the Pot Competition were great and were a great addition to the Exhibition as well.

This month our program will feature Shohin Bonsai. The format will include formal Shohin Bonsai Displays by Wm. N. Valavanis, Toby Ziegler and myself with pipe and drape exhibition style background. Once again you will get to watch all three Artists work on similar Shohin Bonsai material simultaneously. Each of us will answer questions and speak about our design decisions. These "3 RING" programs have been very popular and this one is NOT to be missed!

Mark



The welcome garden - history, artistry, collaboration and more

Tuesday, October 28 at 7:00 pm
Shohin Display and demonstrations
Mark Arpag, Bill Valavanis and Toby Ziegler

As Mark explained in his president's message, the program will feature Shohin Bonsai. Our three featured artists will prepare a formal Shohin Bonsai display and talk about it. Then the three artists will work on similar Shohin Bonsai material at the same time, while answering questions and explaining their work. Toby Ziegler has led our reinstituted Shohin Bonsai Study Group this year, and this will be an excellent culmination of that effort.

Please don't forget our silent auction. As you are cleaning out your cellar and bringing in trees and plant material, think about smaller items that won't go in the bigger Holiday auction. Bring your auction item donations and bring your checkbook.

Buckland Lodge at Brighton Town Park

Refreshment Manager, Marti Macinski will provide snacks, coffee, and individual drinks. If you are willing to bring something to share, please email Marti at mmacinski@mac.com.

2025 - 2026 Programs:

- October 28 , 7 pm, Shohin display and demo
- November 25 - 7 pm Design Studio, led by Mark Arpag, Bob Blankfield and Jim Dolce: an opportunity to get some design help for your favorite tree(s) with thoughtful input from three of our experts
- December 16 - 6 pm Holiday party and Auction
- January 27 - 7 pm Sean Smith Scrolls

See page 4 for dates and programs into 2026

US National Exhibition - A wonderful success



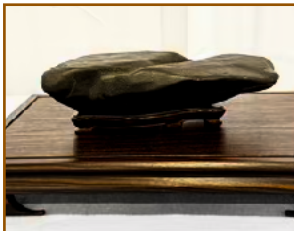
Many hands make . . . still a lot of work! But thanks to our many active BSUNY members and helpers, the work all got done, the show went on, people appreciated many beautiful bonsai trees and the carefully set up displays, and enjoyed meeting old friends and making new friends in bonsai. The well tended ABS learning seminars and workshops helped spread people out between the main show and the Double Tree location. The demonstrations at the US National highlighted 3 superb Bonsai artists, and provided some nice material for the auctions on Saturday and Sunday. Robust bidding at the auctions kept a lively feel to the event, and the vendors had less to take home than they brought with them. A resounding success! Bill and Diane Valavanis did it again!



Suiseki Corner and Suiseki Study Group

Our Suiseki Study Group, open to all Club members, kept the enthusiasm high in 2025, culminating with several members having Suiseki displayed at the US National Bonsai Exhibition. Many thanks to Les Allen, Bob Blankfield and Tom Macinski for keeping this group on track and motivated throughout the year.

The Suiseki Study Group is a wonderful addition to our club as it expands our appreciation of another aspect of the Bonsai world. Consider joining this special group.



Design Studio and Holiday Auction - great upcoming programs

The Design Studio is a great opportunity to start thinking about your tree(s) for the Club Show in May. Bring a tree that you want to refine, and let our in house experts help you plan for the future. Their input will give you a lot to think about and plan for over the winter months, and you'll hit the ground running in the spring to get your tree ready for the Club Show!



As you are putting your trees away for the winter, cleaning up pots, sorting out supplies and tools, this is a great time to fine those extras that need decluttering. Set them aside now, and bring them to our Holiday Auction (all donations) to share with your fellow Bonsai Enthusiasts. Bonsai related items, please, wrapped if practical (to create an element of surprise) and ready to auction off to raise funds for our clubs many programs.

First, though, a social time with appetizers and desserts. The club will provide the ever popular shrimp, festive mulled punch, and the usual coffee, tea, water and seltzer. You can contribute: either an appetizer if you plan to get there on the early side (around 6), or a dessert if you need to arrive a bit later. We'll socialize a bit, share stories of bonsai success over the past year, bask in the glow of the US National Exhibition. At 7 the auction starts, so make sure you register for a bidder number during the social time. Bid early and often, score a couple of good bonsai finds, and help our club raise some money.

One note for planning purposes: please bring normal size servings of apps or desserts. No need to cook for a crowd, as many options often leave us with too many leftovers!

Bonsai and Suiseki events around and about

Every year, Bill, Mark and many others find it difficult to stay home, and go trekking across the country in search of additional Bonsai knowledge and camaraderie. Going to other club events and exhibitions is an excellent way to learn something new, gain a new perspective and meet like minded Bonsai folks.

- Winter Silhouette Bonsai Exhibition, December 6 & 7, 2025
Kannapolis, NC www.winterbonsai.net
- Mid Atlantic Bonsai Societies Spring Bonsai Festival, April 17 - 19 2026
Holiday Inn Harrisburg (Hershey) www.midatlanticbonsai.org
- Fall Fruit & Foliage Bonsai Exhibition, October 17 & 18, 2026
Hidden Lake Gardens, Tipton, MI <https://ipf.msu.edu/hidden-lake-gardens/fall-exhibition>

SHOHIN BONSAI FEATURE OF THE MONTH



Shohin Bonsai, Variety: ????

It may appear to be either a *Pyracantha* or a *Cotoneaster*, but the leaf shape says no. A lot of dramatic movement and interesting twisting in the trunk, but the rest of the tree is visually very busy and confusing to look at. Your eye is jumping all around not sure where to focus on. It is in need of some serious pruning to thin it out and give the tree some clear direction and movement. Potentially a very nice tree, the bright Red fruit against the Green foliage is a Complimentary color combination creating a dramatic Focal Point. The subtle Purple pot with a hint of light Red compliments the Red fruit and is a similar tone harmonizing with the trunk colors

Harvey Carapella

Billboard is brought to you by:

President: Mark Arpag

bsunypresident@gmail.com

Co-editors & photographers:

Marti & Tom Macinski

mmacinski@mac.com

Contributors: Mark Arpag, Bill Valavanis, Marti & Tom Macinski,
Harvey Carapella, Les Allen

Please submit any ideas for the Billboard to Marti & Tom. If you
have ideas for the Billboard, please email Marti & Tom:

mmacinski@mac.com

2026 Program dates:

- February 24 7 pm - TBD
- March 24 7 pm - Bill Valavanis TBD
- April 28 7 pm - Andrew Robson
- May 16 & 17 TBD times, Club Show
- June 23 - 6 pm Club picnic @ Auction
- July 28 - TBD, summer outing
- August 25 - Bring your own tree
- September 29 - TBD