

# ○ UNLOCK PREMIER OFFICE SPACES AT *The Medical Arts Building*

## Available Spaces:

277 Alexander Street, Rochester, NY 14607

**Suite 407:** 1,529 sq. ft.

**Suite 408:** 472 sq. ft.

**Suite 409:** 846 sq. ft.

**Suite 410:** 704 sq. ft.

These suites can be leased individually or combined, providing flexible configurations up to 3,550 sq. ft., tailored to meet your business needs.

**Availability: August 1, 2025**



### *Discover Unparalleled Commercial Leasing Opportunities*

at the iconic Medical Arts Building, located at 277 Alexander Street in Rochester's vibrant Alexander & Park neighborhood. This distinguished Art Deco landmark offers adaptable office spaces designed to cater to businesses of all sizes.

### Building Amenities

- **Prime Location:** Situated on the RTS and University of Rochester bus routes.
- **Modern Comforts:** Features geothermal heating and a smart conference room.
- **On-Site Facilities:** Access to a gym, pub, and restaurant within the building.
- **Parking Solutions:** Offers both a parking lot and garage for tenants and visitors.
- **24/7 Maintenance:** Ensuring a hassle-free experience with round-the-clock support.
- **Secure Environment:** Equipped with several passenger elevators, a freight elevator, and robust security measures.



*Honeyford*  
Commercial and Residential Real Estate

**Matt Honeyford**

MattHoneyford@gmail.com | (585) 797-9544

[www.honeyfordrealestate.com](http://www.honeyfordrealestate.com)

○ UNLOCK PREMIER OFFICE SPACES AT *The Medical Arts Building*

# Available Spaces:

277 Alexander Street, Rochester, NY 14607

**Suite 407:** 1,529 sq. ft.

**Suite 408:** 472 sq. ft.

**Suite 409:** 846 sq. ft.

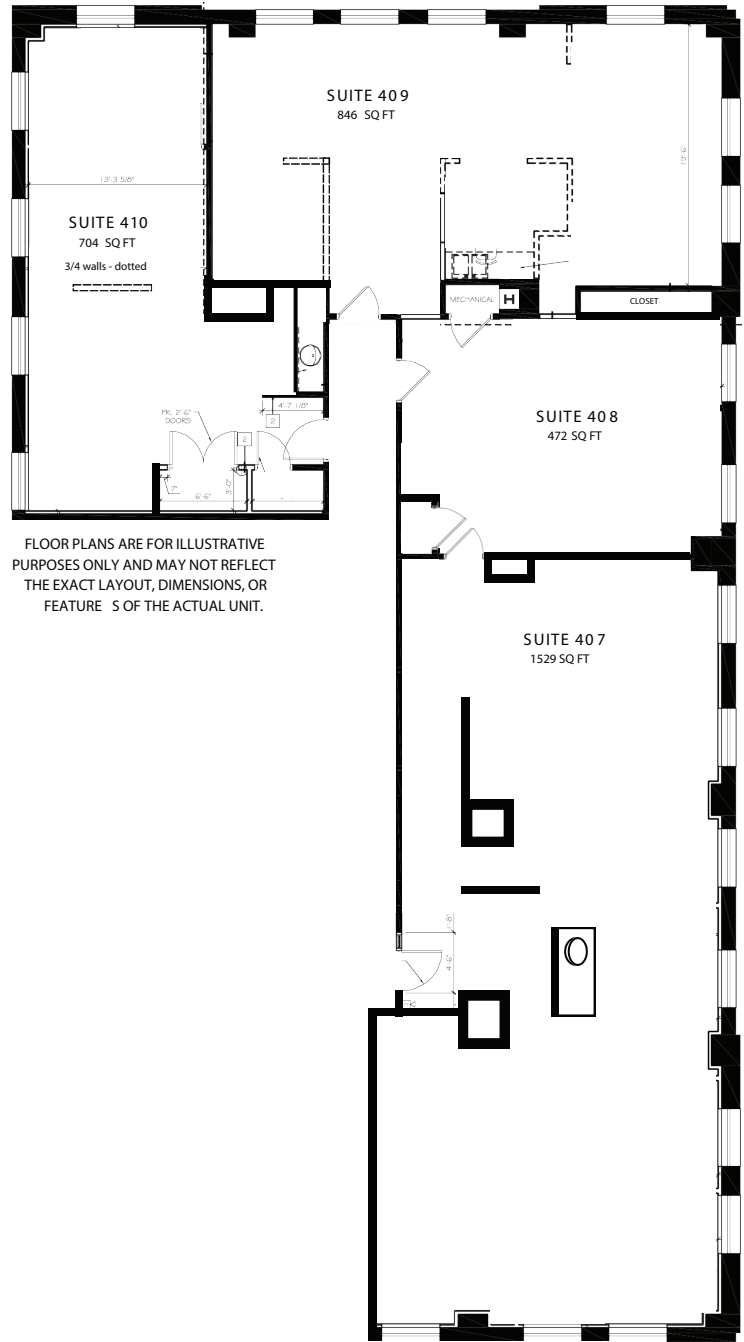
**Suite 410:** 704 sq. ft.

These suites can be leased individually or combined, providing flexible configurations up to 3,550 sq. ft., tailored to meet your business needs.

**Availability: August 1, 2025**

## Building Amenities

- **Prime Location:** Situated on the RTS and University of Rochester bus routes.
- **Modern Comforts:** Features geothermal heating and a smart conference room.
- **On-Site Facilities:** Access to a gym, pub, and restaurant within the building.
- **Parking Solutions:** Offers both a parking lot and garage for tenants and visitors.
- **24/7 Maintenance:** Ensuring a hassle-free experience with round-the-clock support.
- **Secure Environment:** Equipped with several passenger elevators, a freight elevator, and robust security measures.



*Honeyford*  
Commercial and Residential Real Estate

**Matt Honeyford**

MattHoneyford@gmail.com | (585) 797-9544

[www.honeyfordrealestate.com](http://www.honeyfordrealestate.com)